



**Our Quality  
Our Commitment**

# THE COMPANY

---

We are a team of qualified engineers who are in the manufacturing industry for over 24 years. Now as we enter the field of Packaging & Converting industry, we have added a new business vertical of manufacturing of Converting Machines.

At present, Naph Graphics is a renowned name in manufacturing of web offset printing presses, exclusively designed for printing newspapers and textbooks.

Naph is an established brand which has shown its innovation and up gradation capability with time. Here machines are designed according to most advanced standards of engineering, combining optimum reliability & long service life.



# OUR QUALITY OUR COMMITMENT



Naph is committed to provide total satisfaction to all its customers by Design and producing Quality Products consistently as per their requirement by strict adherence to laid down procedures and systems. We strive for continual improvement in quality of product and process by sustained team spirit & hard work.

**Accredited Certification Services**  
**ACS**

*Certificate of Registration*

Certificate Number: XXXXXXXXXX

**NAPH GRAPHICS PVT. LTD.**

HEAD OFFICE: D-93, SECTOR-63, NOIDA - 201 307, UTTAR PRADESH, INDIA  
MFG SITE: PLOT NO-105, TOY CITY ECOTECH-III, GREATER NOIDA-201308, UTTAR PRADESH, INDIA

Accredited Certification Services Pvt. Ltd. certify that the Management system of the above organization has been audited and confirmed to be in accordance with the requirements of the management system standard mentioned below

**ISO 9001:2015**

*The Quality Management System is applicable to*

**MANUFACTURING, DESIGNING & EXPORTERS OF WEB-OFFSET PRINTING MACHINES**

Date of Initial Registration : 05-Sep-2016	Date of Issue : 05-Sep-2016
Date of Expiry : 04-Sep-2019	Renewal Due by : Aug-2019
1st Surve due by : Aug-2017	2nd Surve due by : Aug-2018

**JAS-ANZ**  
**IAF**

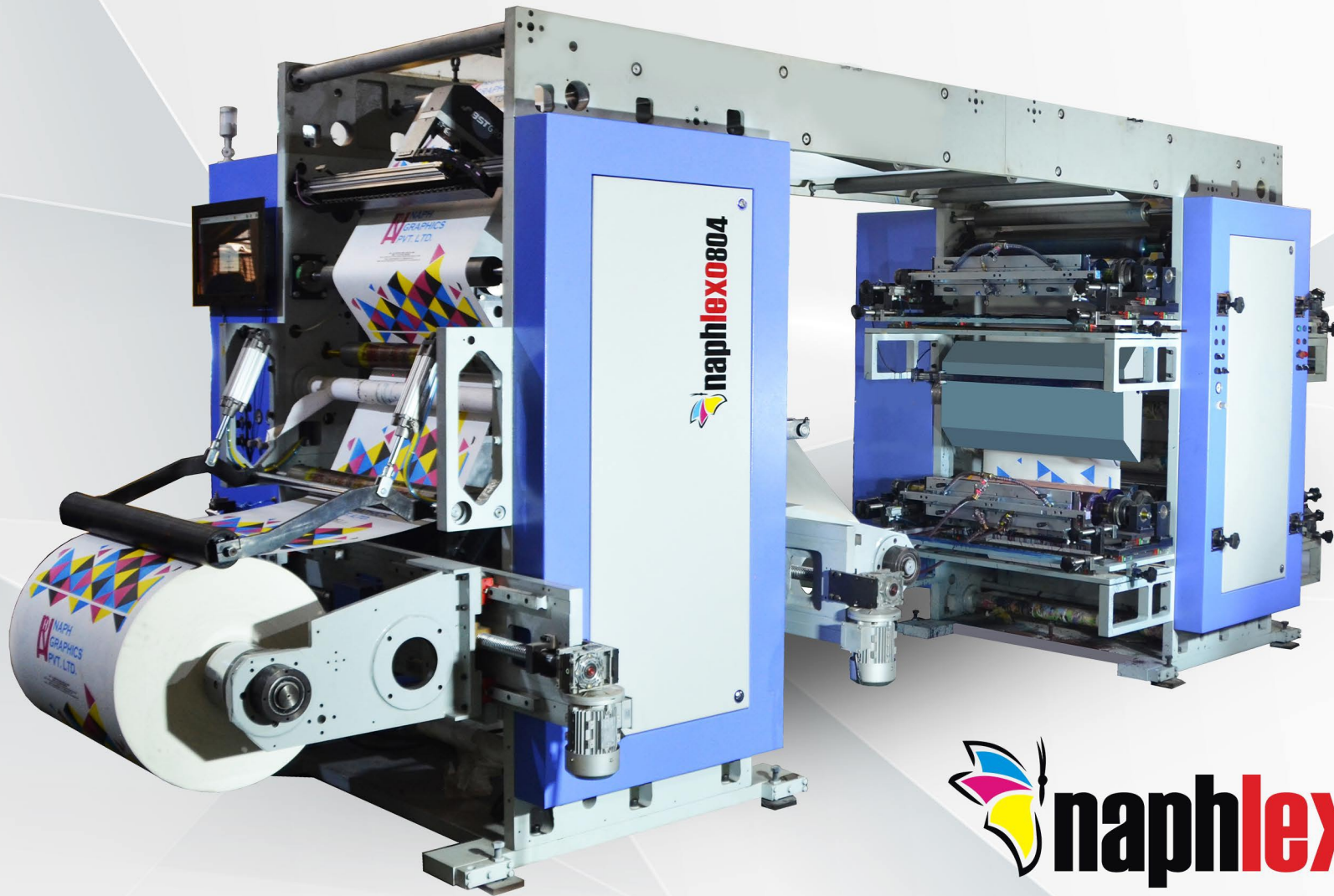
M143204153P

**Managing Director**

**Accredited Certification Services Pvt. Ltd.**  
Accredited By: Joint Accreditation System of Australia & New Zealand (JAS-ANZ).  
809, IVY Estate, Wagholi, Pune - 412 207, Maharashtra, India (certify certificate at <http://www.acs-cert.com>)  
\* Validity of the Certificate is subject to successful completion of surveillance audit on or before of due date. (In case surveillance audit is not allowed to be conducted, this certificate shall be suspended/annulled).  
\* In case of suspension or clarification please write at [info@accertindia.com](mailto:info@accertindia.com) and for certification services pls visit [www.acs-cert.com](http://www.acs-cert.com)  
\* Certificate is the Property of Accredited Certification Services Pvt. Ltd. and shall be returned immediately when demanded.  
\* JAS-ANZ web: [www.jas-anz.org/registration](http://www.jas-anz.org/registration)

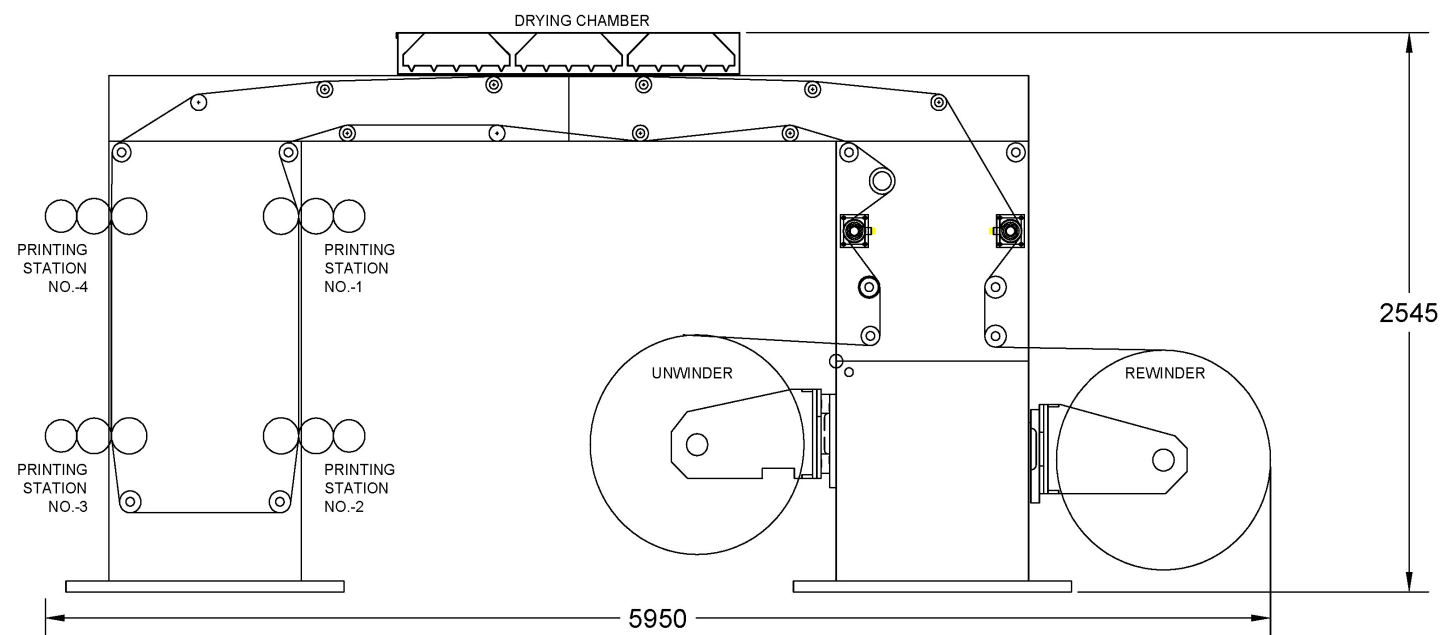
# OUR PRODUCTS

---



 **naphlexo804**

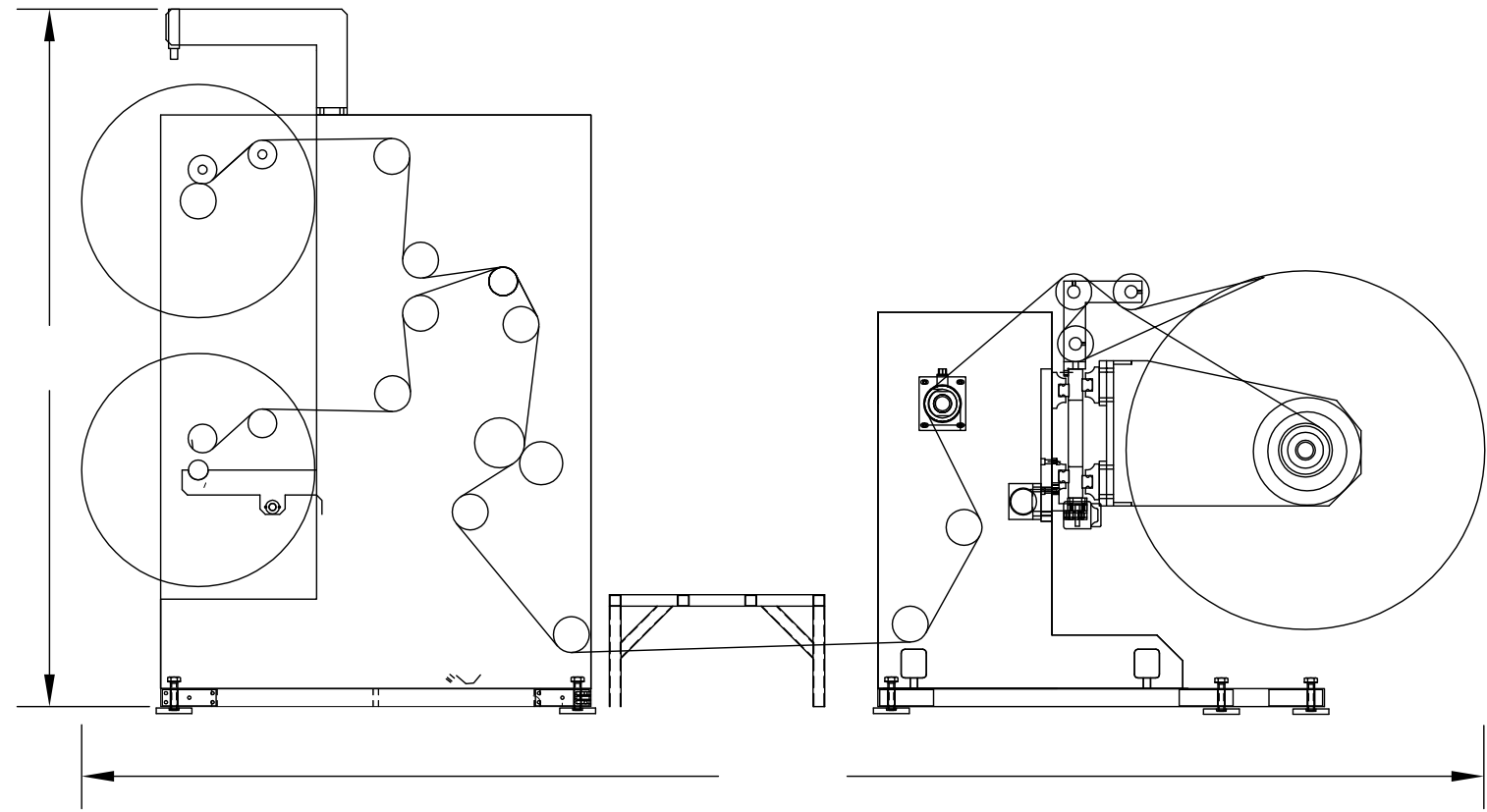
Name of the Equipment	Naph Stack Type Flexographic Printing Machine	
Number of Printing Stations	4-8 Color	
Maximum Web Width	800 mm - 1300 mm	
Maximum Print Width	700 mm - 1200 mm	
Print Repeat	450 mm - 750 mm	
Maximum Mechanical Speed	150 mpm	
Maximum Reel Diameter	1000 mm	
Maximum Reel Weight	1000 kg	
Inking System	Chambered Doctor Blade / Open Tray System	
Anilox Roller	Ceramic Coated	
Materials Handled	Plain, Coated or Metallized Films	12 - 200 Microns
	Film, Foil or Paper Laminates	12 - 200 Microns
	Paper & Board	40 - 200 Gsm

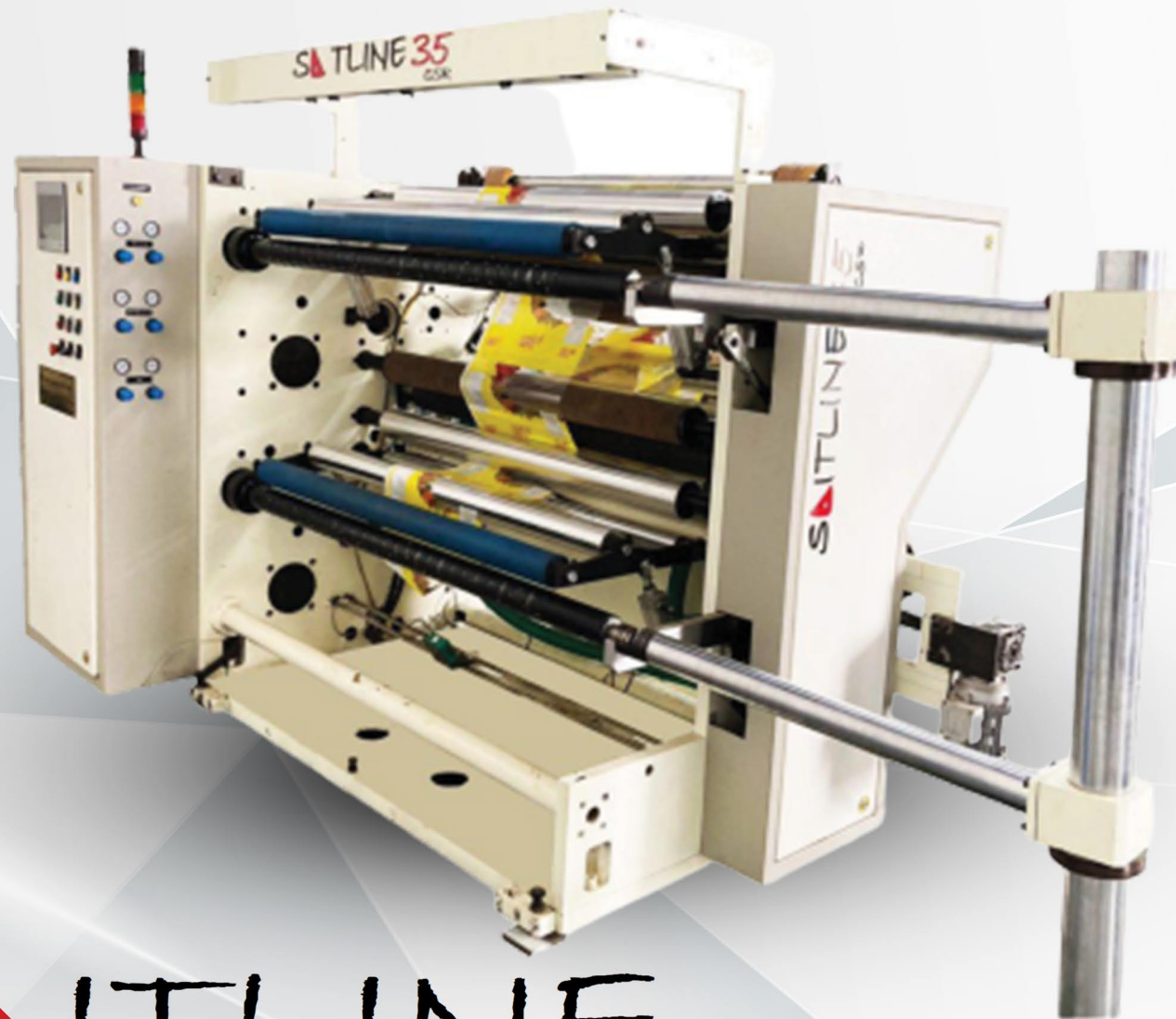




SAITLINE SSR

Type of Equipment	Naph Separate Unwinder Slitter Rewinder Machine	
Maximum Web Width	1300 mm, 1600 mm	
Maximum Mechanical Speed	350 mpm, 450 mm	
Maximum Rewind Diameter	450 mm, 600 mm	
Maximum Unwind Diameter	1000 mm	
Minimum Slit Width	25 mm, 50 mm	
Materials Handled	Plain, Coated or Metallized Films	20 - 200 Microns
	Films	40 - 200 Gsm
	Film, Foil or Paper Laminates	20 - 200 Microns
	Paper & Board	40 - 200 Gsm

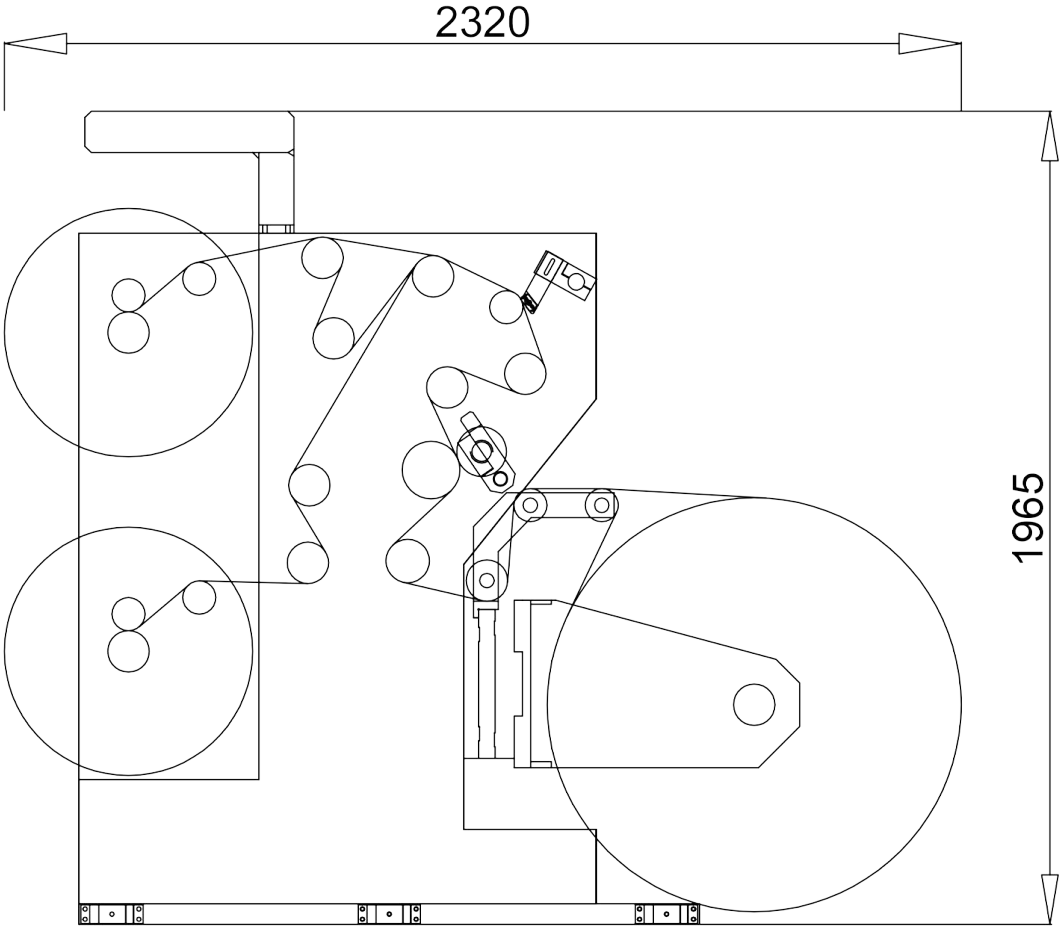




SATLINE  
CSR

**Type of Equipment**  
**Maximum Web Width**  
**Maximum Mechanical Speed**  
**Maximum Rewind Diameter**  
**Maximum Unwind Diameter**  
**Minimum Slit Width**  
**Materials Handled**

**Naph Compact Slitter Rewinder Machine**  
1300 mm, 1600 mm  
350 mpm, 450 mm  
450 mm, 600 mm  
1000 mm  
25 mm, 50 mm  
Plain, Coated or Metallized Films    20 - 200 Microns  
Films  
Film, Foil or Paper Laminates        20 - 200 Microns  
Paper & Board                            40 - 200 Gsm

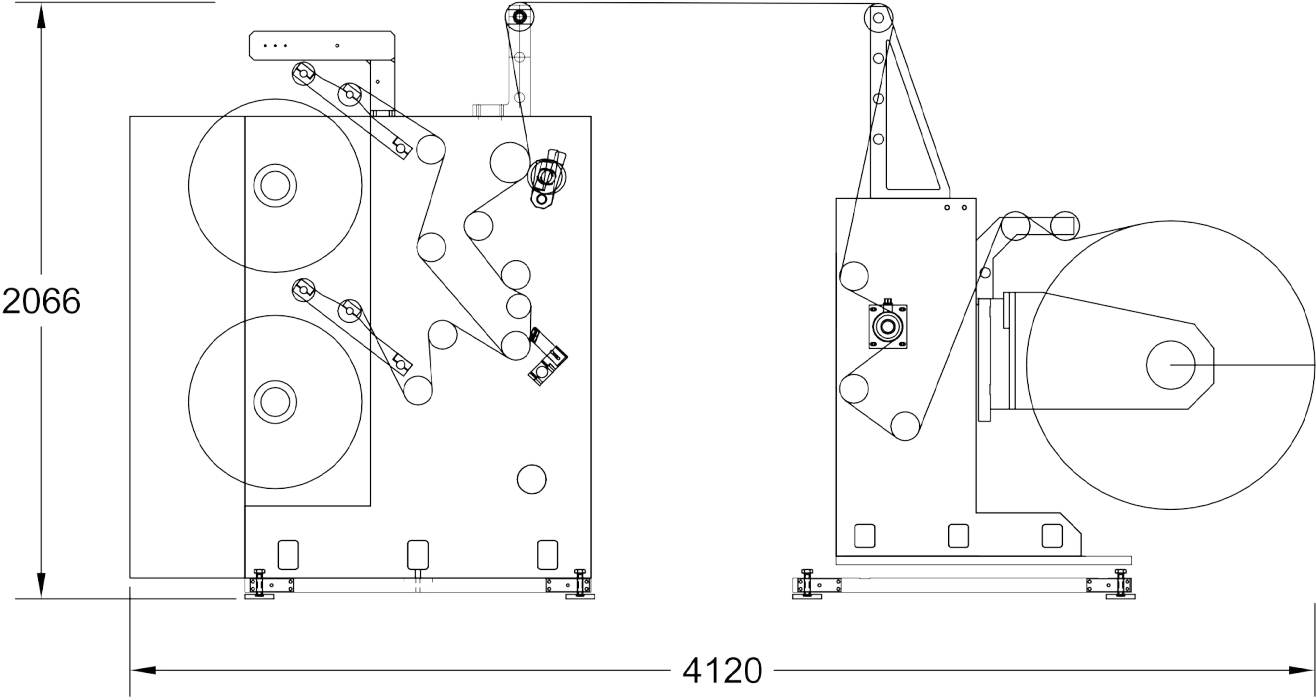




SITLINE<sub>OHP</sub>



Name of The Equipment	Naph Over Head Path Slitter Rewinder Machine	
Maximum Web Width	1300 mm, 1600 mm	
Maximum Mechanical Speed	350 mpm, 450 mm	
Maximum Rewind Diameter	450 mm, 600 mm	
Maximum Unwind Diameter	1000 mm	
Minimum Slit Width	25 mm, 50 mm	
Materials Handled	Plain, Coated or Metallized Films	20 - 200 Microns
	Films	
	Film, Foil or Paper Laminates	20 - 200 Microns
	Paper & Board	40 - 200 Gsm





SAITLINE<sub>DSR</sub>

**Name of The Equipment**

**Naph Drum Type Slitter Rewinder Machine**

**Maximum Web Width**

**1300 mm, 1600 mm**

**Maximum Mechanical Speed**

**150 mpm, 250 mm**

**Maximum Rewind Diameter**

**800 mm, 1000 mm**

**Maximum Unwind Diameter**

**1000 mm**

**Minimum Slit Width**

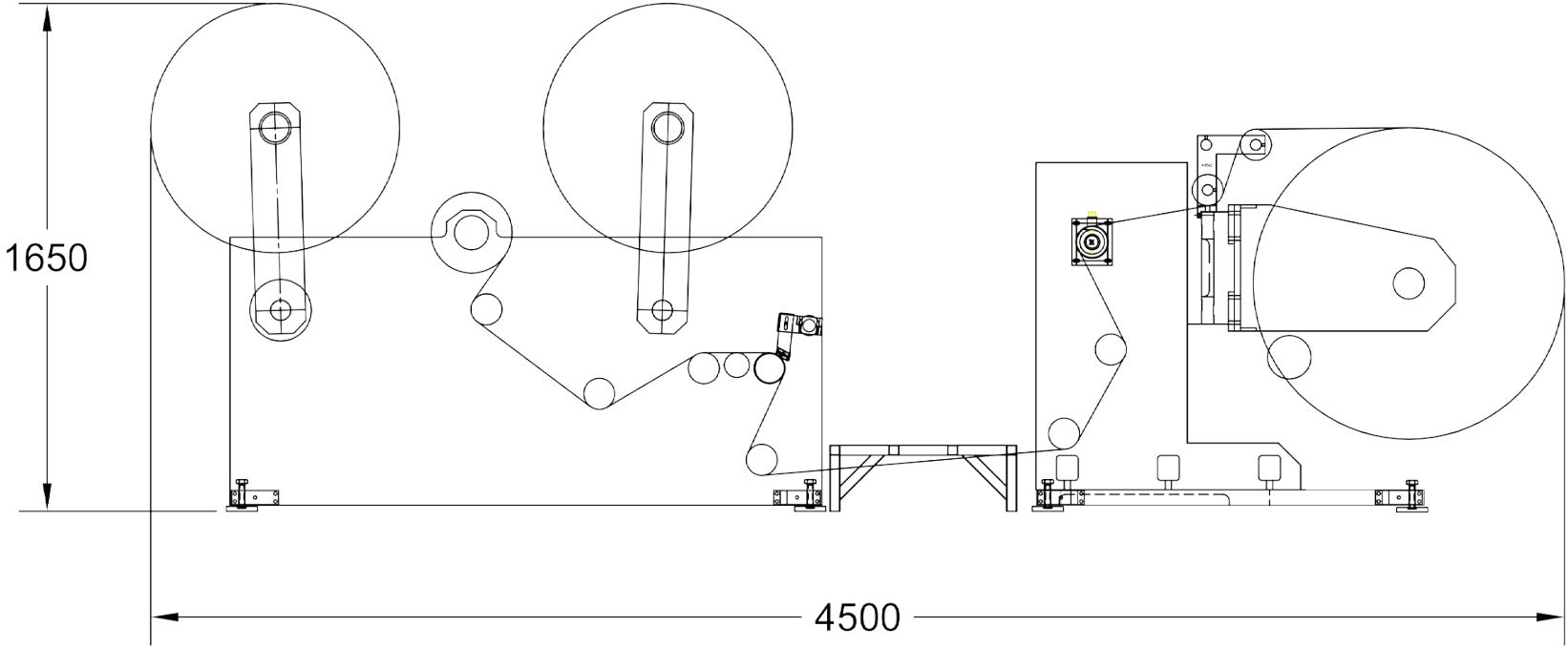
**25 mm, 50 mm**

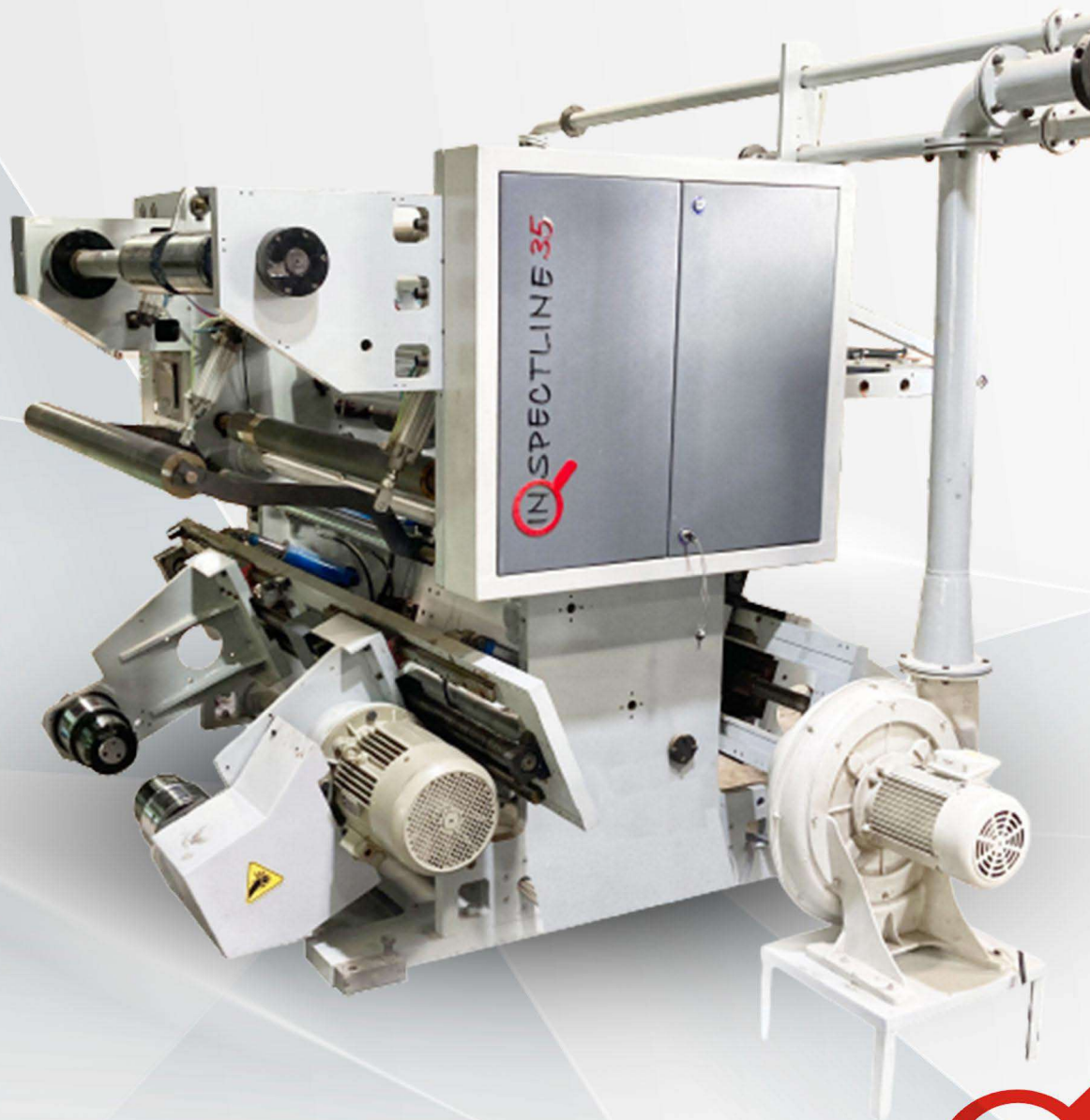
**Materials Handled**

**Plain, Coated or Metallized Films    20 - 200 Microns  
Films**

**Film, Foil or Paper Laminates        20 - 200 Microns**

**Paper & Board                              40 - 200 Gsm**





INSPECTLINE

**Name of The Equipment**

**Naph Inspection Rewinder Machine**

**Maximum Web Width**

1300 mm, 1600 mm

**Maximum Mechanical Speed**

350 mpm, 450 mm

**Maximum Rewind Diameter**

450 mm, 600 mm

**Maximum Unwind Diameter**

1000 mm

**Inner Core Diameter**

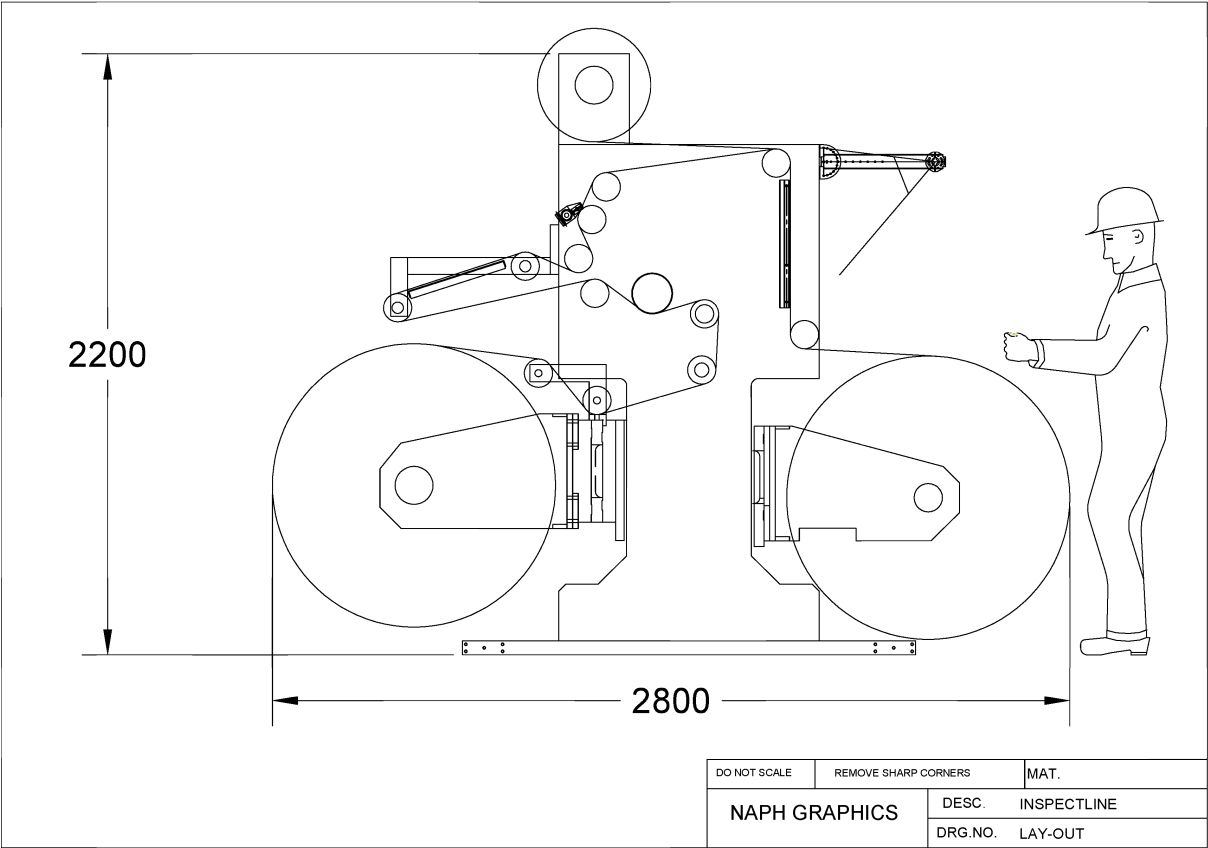
75 mm

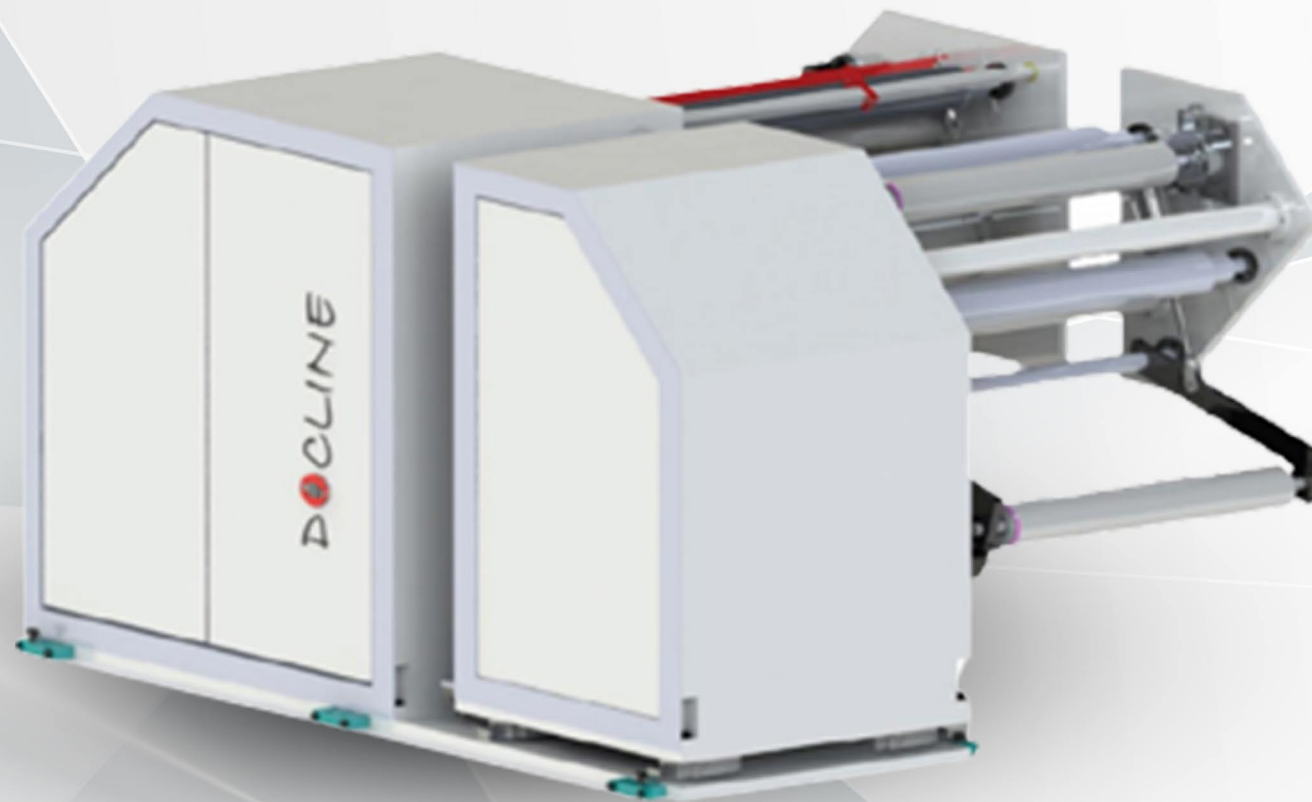
**Unwind Axis Movement**

± 50 mm

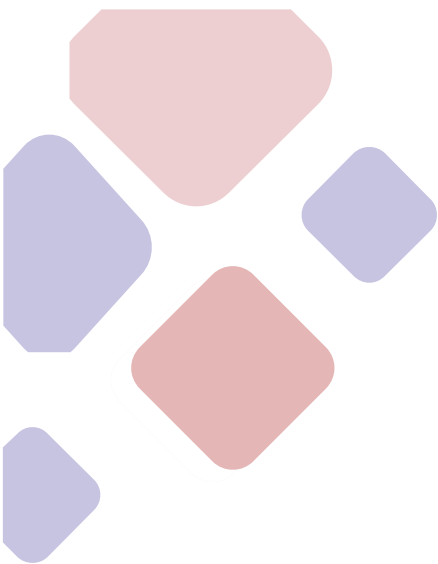
**Materials Handled**

Plain, Coated or Metallized Films	12 - 200 Microns
Film, Foil or Paper Laminates	12 - 200 Microns
Paper & Board	40 - 200 Gsm

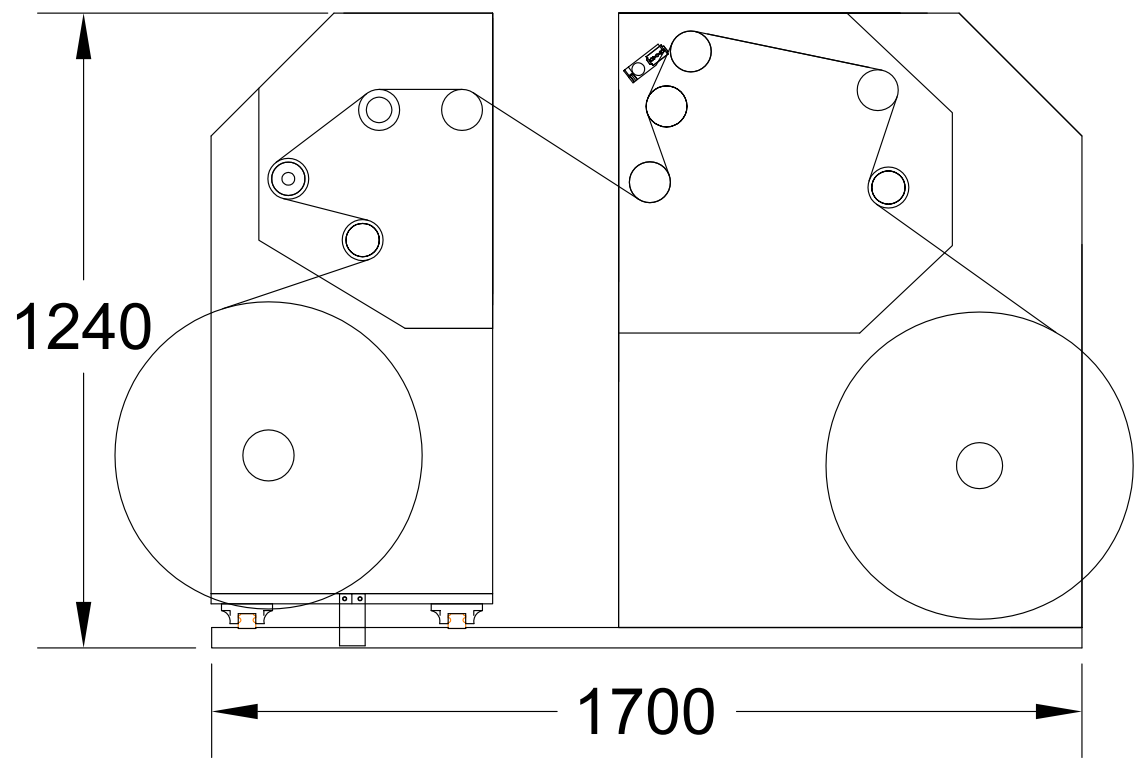




DOCLINE



Name of The Equipment	Naph Doctoring Rewinder Machine	
Maximum Web Width	500 mm	
Maximum Mechanical Speed	350 m/min	
Maximum Rewind Diameter	600 mm	
Maximum Unwind Diameter	600 mm	
Maximum Core Diameter	75 mm	
Unwind Axis Movement	± 50 mm	
Materials Handled	Plain, Coated or Metallized Films	12 - 200 Microns
	Films	
	Film, Foil or Paper Laminates	12 - 200 Microns
	Paper & Board	40 - 200 Gsm



# OUR INFRASTRUCTURE



Our infrastructure plays an important role in enabling us to meet the exact requirements and standards of the industry. We produce machinery using latest state of the art technology and facilities to consistently improve the productivity and quality of our products.

Our company also boasts of highly skilled team of engineers and trained Professionals who are comparable to the best in the industry



# GLOBAL PRESENCE & INSTALLATIONS AROUND THE WORLD






## Works:

**Unit-I:** D-93, Sector-63, Noida - 201307 (U.P) India

 +91 120 4280185

 +91 9999767656, +91 9811444928

**Unit-II:** Plote No. 105, Toy City, Ecotech - III

Greater Noida - 201308 (U.P) India

 naphgraphics@yahoo.co.in, info@naphgraphic.com

 [www.convertingpackaging.com](http://www.convertingpackaging.com), [www.naphgraphics.com](http://www.naphgraphics.com)